



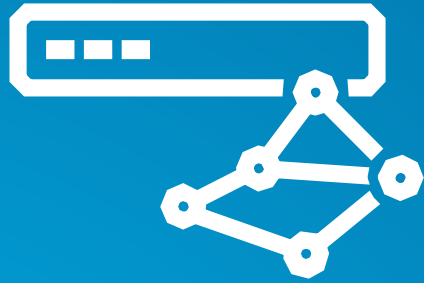
# ArcGIS Solutions, Workflows, Tools, and Examples for COVID-19 Response: Experiences and Use Cases

Mark Scott | [mScott@esri.com](mailto:mScott@esri.com) | May-19 2020

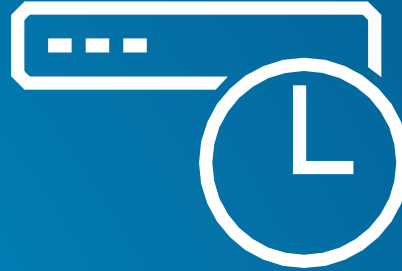
- Do your citizens know where their nearest COVID-19 testing facility is?
- Is there one place that people can go for information on school closures?
- Are the statuses of community resources—like libraries, museums, lunch programs, and community centers—communicated to citizens in a resource that is updated frequently?
- Does the information being distributed to citizens come from an authoritative source?

# The Technical Challenges Faced by Communities

They are many, and vary greatly...



IT infrastructure  
and resources




Development and  
configuration time



Data accuracy  
and timeliness

*Pressure to produce something quickly*



*Each community is unique, and appropriate mitigation strategies will vary based on the level of community transmission, characteristics of the community and their populations, and the local capacity to implement strategies.*

[CDC COVID-19 Community Mitigation Strategy](#)

# Possible Coronavirus Response Workflows

Ideas explored with Counties and Municipalities in New England and New York

- Conversations started before the Solutions had been made available
- Several options were investigated
  - ArcGIS Maps for Office (initially considered)
  - Survey 123, both using the Solution, or independently
  - Simple web map with editing app from Web App Builder
  - ArcGIS Online Hosted Feature Layers and Tables
- Most important user need: Coronavirus Operations Dashboard
- Now, Esri has several packaged Solutions

*Many Options*

# Coronavirus Related Solutions

Adding more by the week



Coronavirus Small Business Recovery

May 18, 2020



Coronavirus Wellness Checks

May 18, 2020



Coronavirus Testing Sites

May 7, 2020



Coronavirus Recovery Dashboard

May 7, 2020



Coronavirus Response

May 7, 2020



Coronavirus Force Readiness

May 5, 2020



Hospitalization and PPE Inventory

May 5, 2020



Coronavirus Business Continuity

May 1, 2020

...targeting state and local health agencies

# Deployment of Coronavirus Related ArcGIS Solutions

2 methods

- ArcGIS Solutions Deployment Tool in ArcGIS Pro
  - <https://solutions.arcgis.com/shared/help/deployment-tool/>
- ArcGIS Solutions Deployment Tool on ArcGIS Online
  - Work in progress, rolling out more content daily
  - Will eventually support most Solutions
  - <https://hub.arcgis.com/apps/solutions/?sortField=Newest#home>

*Both are supported*

# Coronavirus Response Solution



# Coronavirus Response Solution

Will help you

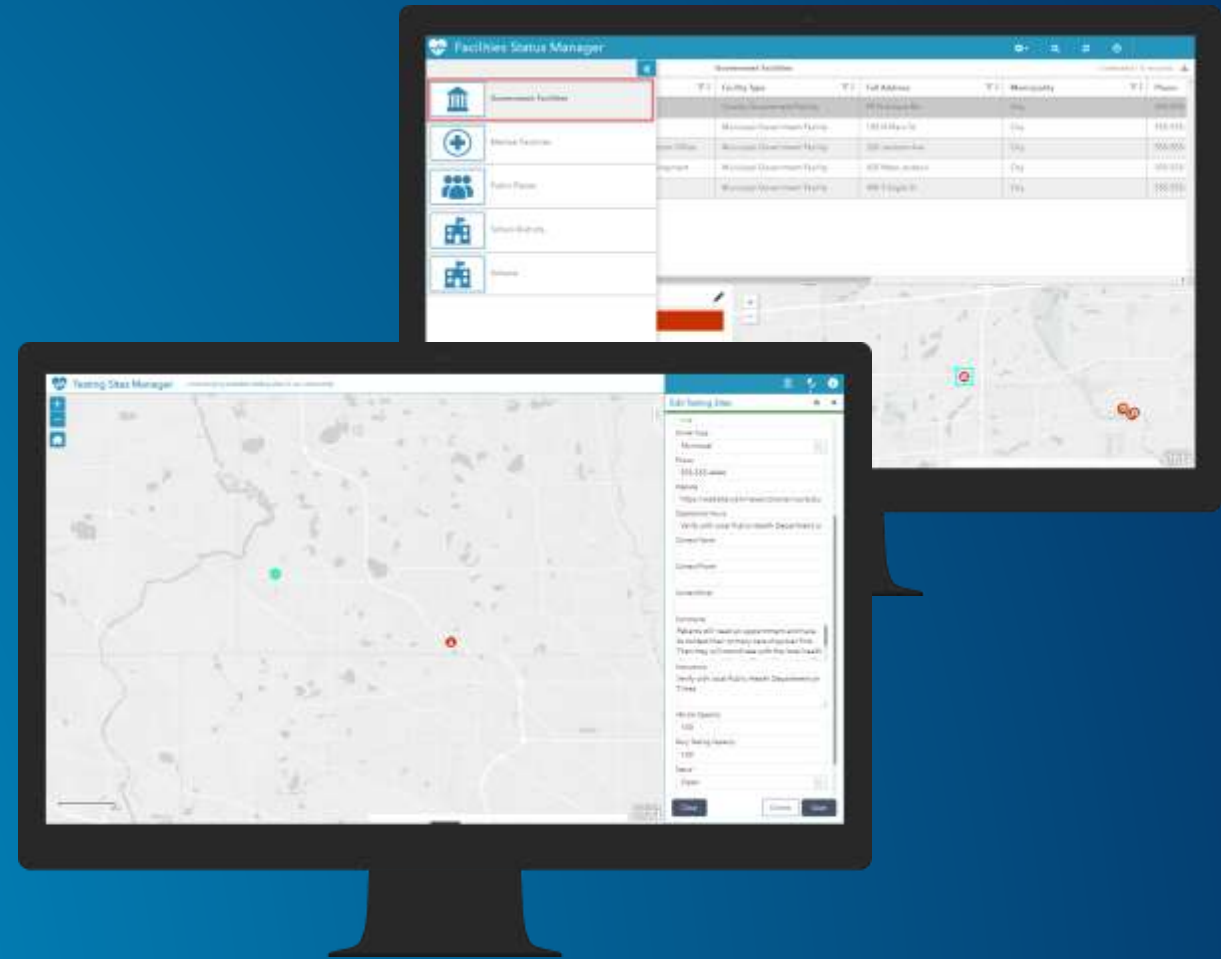
- Monitor coronavirus cases
- Track the impact on public gathering places
  - Schools, government buildings, and other common places
- Inventory places where people can get testing and treatment
  - Testing sites, hospitals, and clinics
- Share information with the public to increase public awareness

*...targeting state and local health agencies*

# Apps for Health and Human Services Staff

What you get

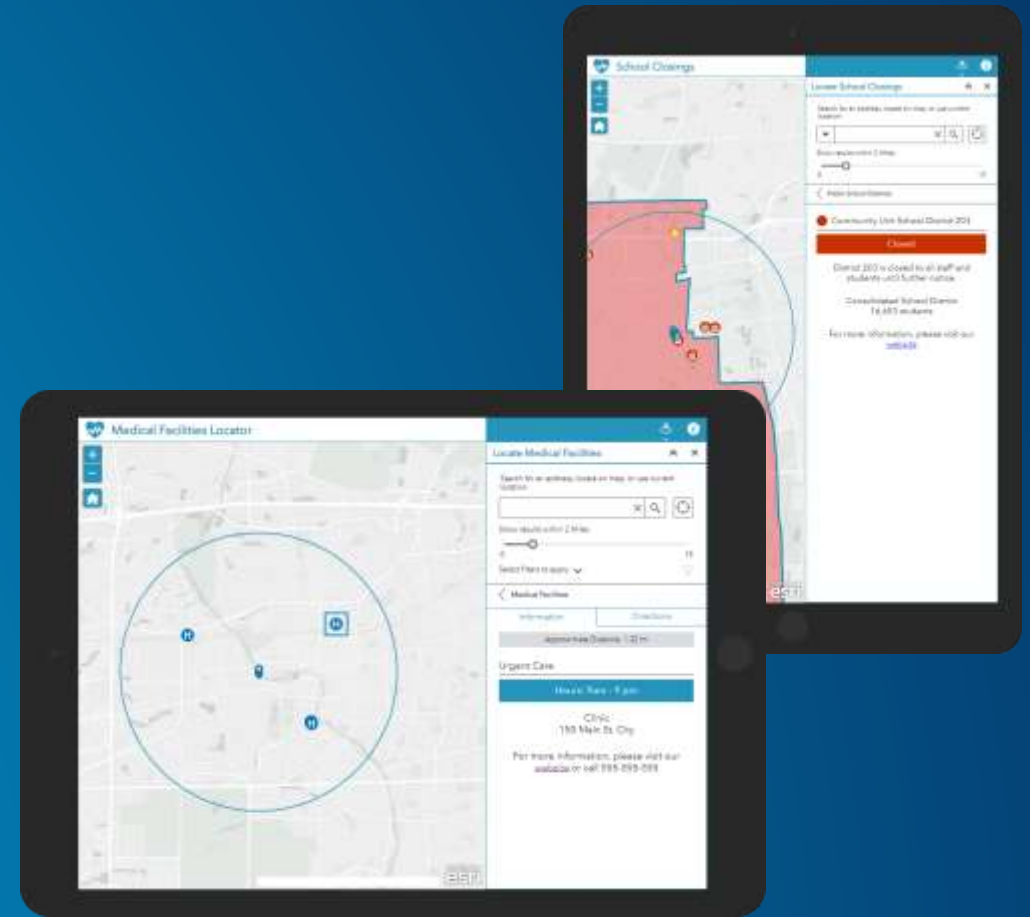
- Case Reporter
- Facilities Status Manager
- Testing Sites Manager



# Apps for the Community

What you get

- School Closings
- Community Closings
- Medical Facilities Locator
- Testing Sites Locator



# App for Incident Commanders – and the Community

What you get



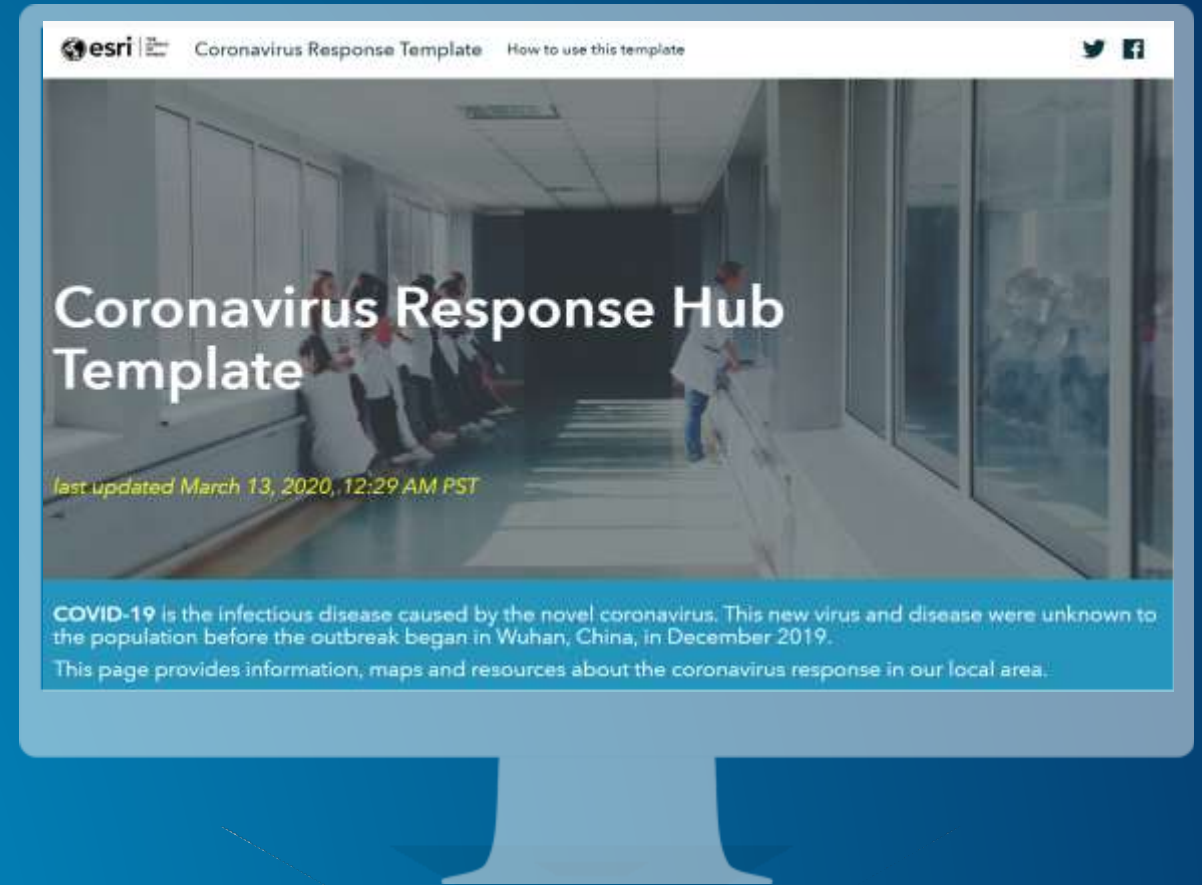
- Community Impact Dashboard

# Coronavirus Response Hub

Your Destination for Coronavirus Resources

## Website template for ArcGIS Hub

- Share information and resources about coronavirus response in your community
- Provide a central web destination for Coronavirus Response maps and apps
- Available to all ArcGIS Online users



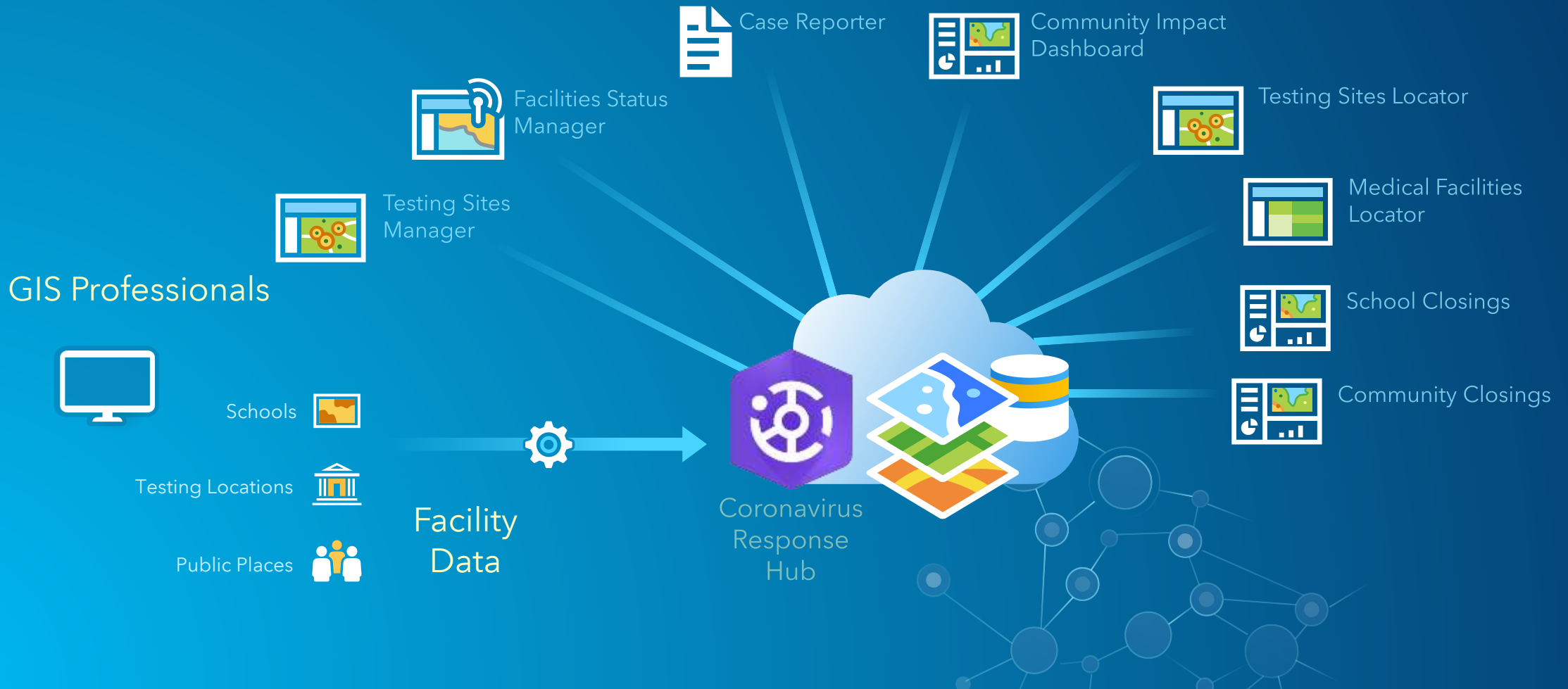
# Integrated Solution

Delivered as a SaaS offering

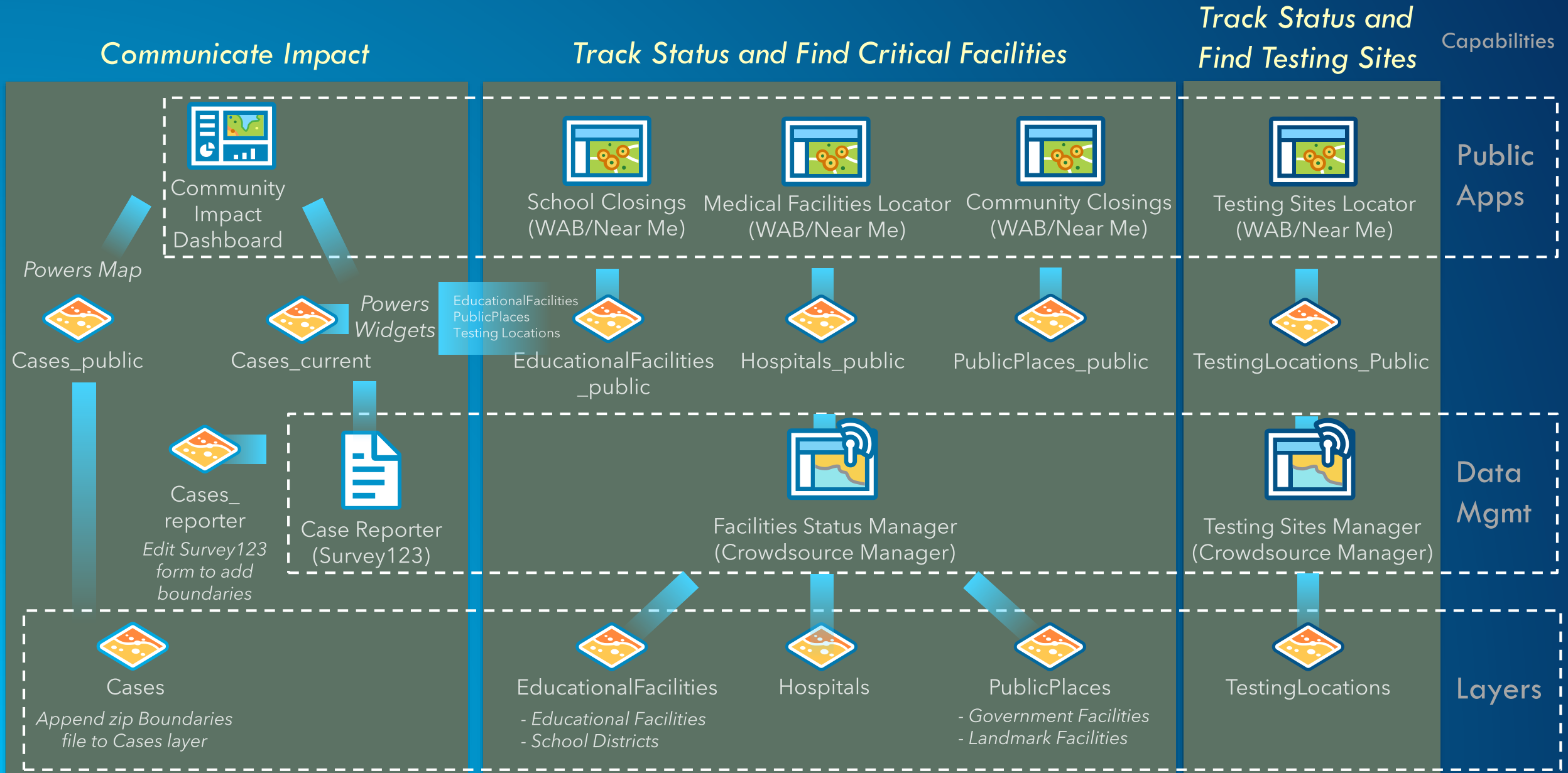
Incident Commanders  
& Executives

Health and Human Services Staff

General Public



# Coronavirus Response Solution Components



# Coronavirus Response – Putting It All Together

What you get

## Software

- Coronavirus Response Maps and Apps
  - Use configurable maps and apps that leverage your authoritative location-based data
- Coronavirus Response Template for ArcGIS Hub
  - Deploy your own Coronavirus Response Hub site
- ArcGIS Online Subscription and ArcGIS Hub Basic
  - Power your solution with ArcGIS platform software

## Support

- Implementation and Enablement Activities (optional)
  - Get help from Esri to load your content, configure solutions, and educate your team
- Technical Support
  - Get tech support from Esri to maintain the solution and incorporate new capabilities

# Getting Started

What to do next

## Launch your Coronavirus Response Hub:

- **Blog Post:** How to Launch a Coronavirus Response Website Today (<https://www.esri.com/arcgis-blog/products/arcgis-hub/sharing-collaboration/how-to-launch-a-coronavirus-response-website-today/>)
- **Website:** ArcGIS Hub – COVID-19 Featured Sites (<https://hub.arcgis.com/pages/covid-19>)

## Deploy the Coronavirus Response Solution:

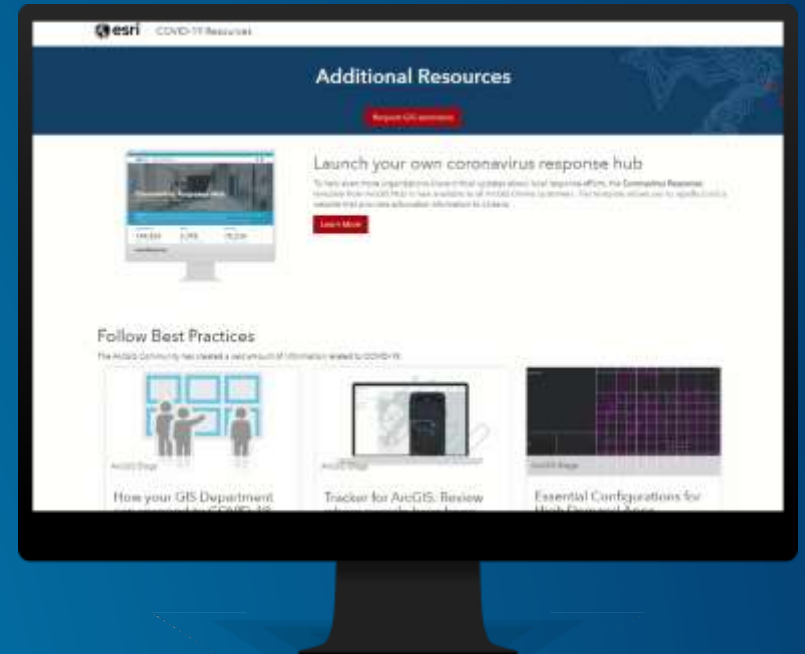
- **ArcGIS Solutions:** The Coronavirus Response Solution <https://solutions.arcgis.com/local-government/help/coronavirus-response/>
- **Solution Webinar:** Discuss the New Coronavirus Response Solution (Virtually) <https://www.meetup.com/ArcGIS-for-Local-Government/events/269486877/>

# Other COVID-19 Resources

What to do next

Some helpful resources:

- **Website:** COVID-19 Resources Hub (<https://coronavirus-resources.esri.com/>)
- **Blog Post:** How Your GIS Department Can Respond to COVID-19 (<https://www.esri.com/arcgis-blog/products/apps/local-government/how-your-gis-department-can-respond-to-covid-19/>)



# Examples of Coronavirus Response

See How ArcGIS is Supporting Coronavirus Response



**Coronavirus Response Hub**  
Montgomery County, Texas



**Florida COVID-19 Hub**  
University of South Florida Libraries



**Oswego County Coronavirus Response Dashboard**  
Oswego County, New York



**COVID-19 Rwanda**  
Rwanda Ministry of Health and Rwanda Biomedical Centre

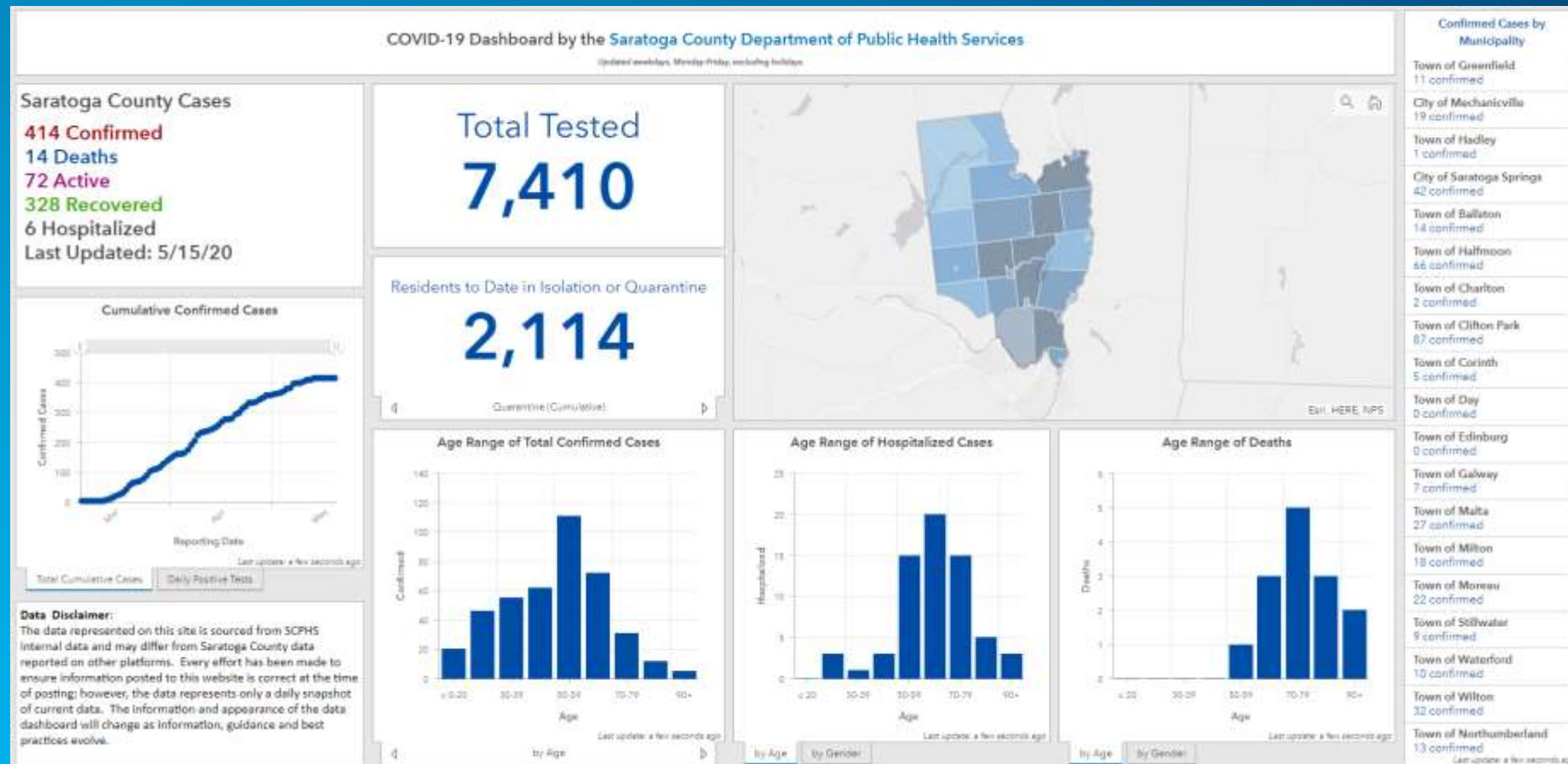
# Example: Saratoga County, New York

Supporting Saratoga County Municipalities

- Conversation started before the Solutions had been made available
- County applied for Disaster Assistance from Esri for ArcGIS Online, Community Analyst, etc.
- Motivated Staff at Saratoga County were critical to success
  - Meg O'Leary, Saratoga County Public Health Services
  - Troy Hilts, Saratoga County Planning
- Most important user need: Coronavirus Public Dashboard to communicate status *Public Dashboard*
- Maintaining the data in Excel spreadsheets
  - Summary statistics for the County and the Municipalities (Cities, Towns, Villages)
  - Daily testing numbers
  - Daily case statistics

# Saratoga County Department of Public Health Services COVID-19 Dashboard

- <https://www.saratogacountyny.gov/departments/publichealth/covid19/>



# Esri Boston's Hub: <https://go.esri.com/bostonhub>



Esri Boston About Events News Community Makers Space



## COVID-19: Get live maps, data, apps, and information

[View COVID-19 resources](#)



# esri

THE SCIENCE OF WHERE™

## Esri Boston Regional Office Hub

State & Federal

50 & 15

ArcGIS is used by all 50 States, and all 15 Federal Executive Departments

Local Governments

100%

ArcGIS is used by all of the top 100 most populated Counties in the US

Fortune 100 Companies

90%

Percentage using ArcGIS in the Fortune 100

Education

87

Number of Forbes top 100 colleges in the US using ArcGIS

Esri is pioneering ArcGIS, the world's most powerful mapping and analytics software.

Esri Boston's Hub: <https://go.esri.com/bostonhub>

## Sign Up and Follow Esri Boston

Sign up and follow Esri Boston to receive updates on local events and GIS stories from around Boston.

 Follow Our Office



1:45 – 2:15 p.m.

**Esri Session #7:**  
**ArcGIS Hub: Bringing the Community  
Together**

*Presenter: Tom Schwartzman*

Part of Esri Geospatial Cloud, ArcGIS Hub is an easy-to-configure community engagement platform that organizes people, data, and tools through information-driven initiatives.





esri

THE  
SCIENCE  
OF  
WHERE